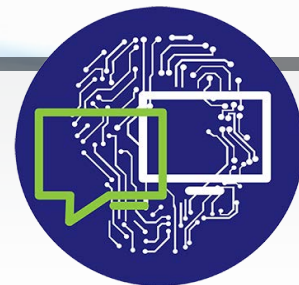




TOOL FOR RISK ANALYSIS & COMPLIANCE

Tim Tech Consults's Add-On Solution for SAP Compliance Management



Tim Tech Consults's T.R.A.C. is a simple, cost-effective, native solution add-on to your SAP landscape that protects your SAP investment. For many organizations, compliance and real time risk capture is one of the most difficult controls to deploy and sustain given the hundreds of users, roles, and processes that require access and authorization evaluation. Proper segregation of duties (SoD) and access control over key information assets are among the most effective safeguards against fraud and mistakes.

CONFIDENTLY MANAGE RISK WITH GREATER VISIBILITY

Tim Tech Consults's T.R.A.C. provides real-time compliance reporting capability, including the segregation of duties analysis at the object level. This easy-toconfigure product will act as a one-stop interface for security administrators and senior management who are concerned about a regular audit of the system and compliance leaks. The solution integrates all levels - from the organizational security matrix sync to configuration capability attaching business processes and impact assessment to the end reporting and distribution.

T.R.A.C BENEFITS

- Cost effective as it a native SAP solution nestled perfectly within your current landscape
- Simple solution with simple reports
Centralizing Access management compliance with integrated reporting
- Accurate Real-time visibility Empowering Security Admin/stakeholders to confidently manage and reduce access risk across the enterprise
- Maintains Regulatory Compliance Sarbanes-Oxley Act and 8th EU Directive

VALUE PROPOSITION FOR COMPANIES

Simple

- Easy to manage reports delivered out of the box, providing one stop solution board to the security team
- Rapid Deployment – 4 weeks instead of 4 months

Scalable

- Highly configurable to accommodate changing business definition and nature of risks
- Potential to cover the entire SAP landscape (not just your ECC investment)
- Quick and Guaranteed ROI

Cost Effective

- Turn-key solution for requirements; in contrast to extensive GRC suites for compliance calibration and control
- No additional Server infrastructure required
- Pay less - Dedicated solution targeting dedicated processes

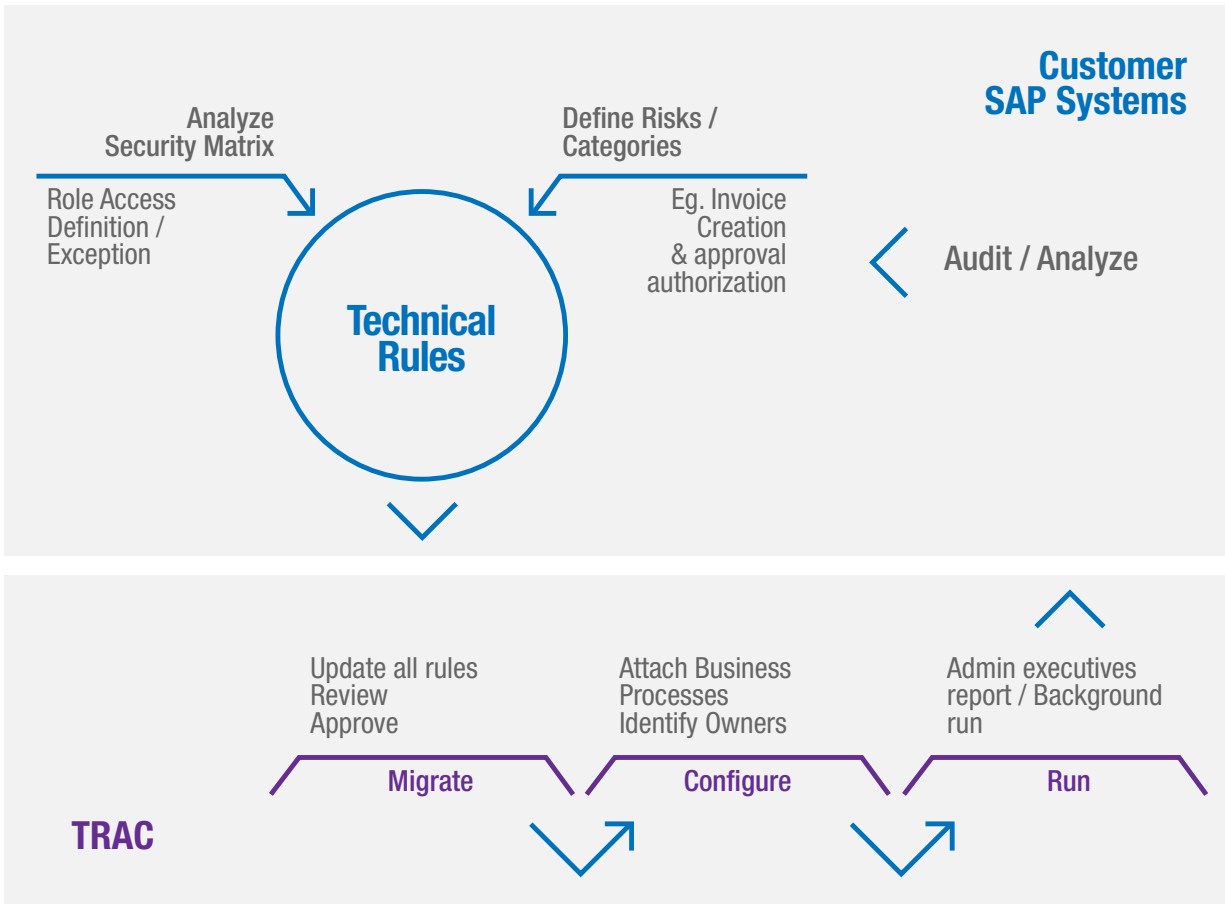
Safe guard your SAP systems with a Native SAP solution.

Gain control over compliance violations to improve your audit performance and turn around

RISK AND REMEDIATION: EVERYTHING RESIDES IN ONE LOGICAL PLACE

Tim Tech Consults's TRAC solution integrates all levels - from the organizational security matrix sync to configuration capability, attaching business processes and impact assessment to the end reporting and distribution. One of the most time consuming aspects of any SAP product installation effort is the integration of a new platform with the SAP system.

But what if your compliance management solution was a core part of your SAP system? In that case there is no integration effort; all your data and business rules are at your fingertips. Best of all, any changes in business rules do not need to be separately replicated.



ABOUT TIM TECH CONSULTS

Founded in 2010, Tim Tech Consults is an African leading provider of process-driven IT solutions with 10 years of Expertise in 3 Offices in East Africa with 15 Global Delivery Centers on the Global, Tim Tech Consults helps improve time-to-business-solution, lower costs of existing applications, deliver better engineered and tested applications, and produce predictable outcomes for top-tier corporations in over 5 countries. Through on-site, on-shore and its trademarked Global Nearshore service delivery models, Tim Tech Consults teams with CIOs to constantly increase the business value of IT. Tim Tech Consults is the creator and a leader of the nearshore industry.

Tim Tech Consults
P.O. Box 2766 Plot 44, Kampala, Namugongo Road, Home and office complex building, 2nd floor room B1
Office : +256(414) 677700 +256(200)907700
TollFree: 0800107700